



© Sébastien Grébille

Alain Reynaud

&

The Luxembourg Philharmonie

Present

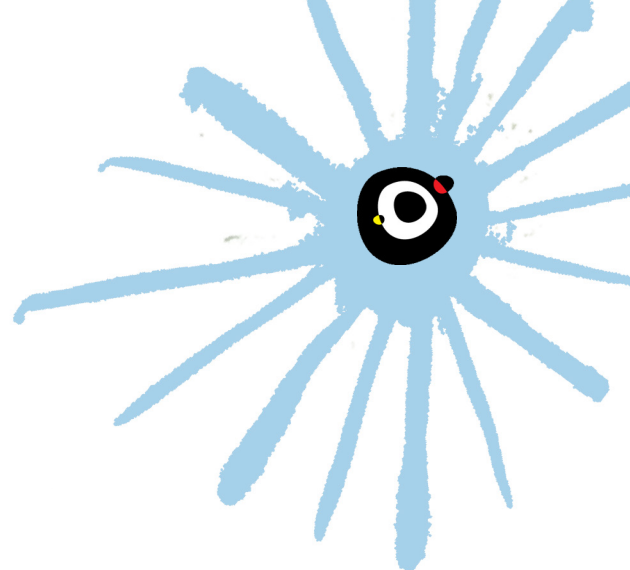
Claricello

A musical fantasia for a quirky trio.

Nursery schools / 40 min

Primary schools and family audience / 50 min

PREMIERED IN
2021



CLARICELLO

Claricello is a musical box, a poetic piece of machinery, tenderly and mischievously played by three imps with their suitcase-cubes. Their lanterns lit up, these three breezy elves invite us to visit their puppet booth.

Three genius musicians, dancers, poets, who without seeming to, charm and disarm us as they play with their instrument-partners ... Three homoludicus dancing to the tick-tock of the singing clock... popping up unexpectedly on the days the stars wink and the moon does a back flip.

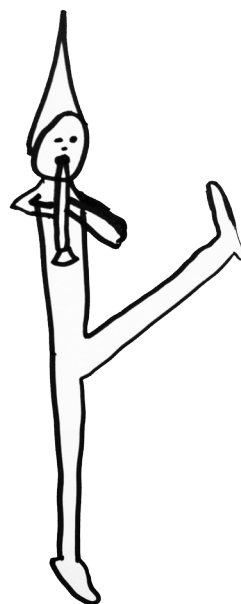
Like animals shedding their old skins, the musical instruments come alive and take their place in the hands of the characters for this nonsensical, topsy-turvy tale.

Clari, a clarinet with plenty of puff and a lot of cheek, a head full of air and tunes.

Cello, a big fat violin, rubbed the right way with the magic wand that is its bow.

And Léopold, a strange character from who knows where.

And suddenly things get tricky ... clowning and dance together gatecrash classical music !



© Sébastien Gréville





© Sébastien Grébille

CAST AND CREATION TEAM

Alain Reynaud artistic director
Clara Trotabas assistant director
Fabrice Bihan cellist
Louise Marcillat clarinetist
Isabelle Quinette dancer & singer

Léa Emonet costume designer
Gilles Richard lighting designer
Gilles Drouhard / Yann Guénard set design and construction
Nathalie Leroy stage management

Sébastien Lhommeau production
Pauline Boulai marketing & tour organiser
Emmanuel Cornuel administration
Flavie Rauscher assistant production

This show is designed for indoor theatres

Stage requirements : 8m/8m

(an adaptation of the show is possible)

Our technical rider (sound and lights) is available on request.



Research sketch



© Flavia Raus

THE PATHWAY TO CREATION ...

Right from its early beginnings in 1991, the company Les Nouveaux Nez, of which I am a co-founder, has placed music at the centre of its work, parallel to the clowning. Throughout my clowning adventures, I have matched and merged my work with dance and music through many striking encounters with the artists that have gone on to become my fellow travellers (Isabelle Quinette, Nathalie Cornevin, Chris Hayward, Louise Marcillat, Fabrice Bihan).

In creating three projects for young audiences (Plume & Paille, Pétouchok and Chapô-Chapô) the porosity and the resonance between these two artistic skills has become a permanent feature. The cross-disciplinary versatility of musical and dance vocabulary gives us a wide-ranging lexicon for our clowning. Movements, silence, tempo, syncopation ... vocabulary full of organic vitality, generating infinite elements of stage play.

The first steps in each project take place onstage. The tangible elements we discover

between us form the first framework. The uniqueness of each performer determines the substance of the project.

The next step is our onstage group work. Through this we build a common language and a shared universe. Regular improvisation work continually nourishes the construction of the show and punctuates the beginning of each creation. Roles, figures and characters emerge from the group work.

Throughout the creation period and rehearsals we go back and forth from the stage to the table (our observation pole and think tank), trying to analyse the madcap goings-on, trying to decipher this vital jubilation we call “play”: intense, autonomous, captivating play, which needs no explanations and answers to no one. Playing, like laughter, invites us to roam the world with fresh eyes full of wonder.

Alain Reynaud
Artistic Director



© Philharmonie du Luxembourg

ALAIN REYNAUD AND THE LUXEMBOURG PHILHARMONIE

Alain Reynaud, performing artist and director of the Cascade, National Circus Centre for the Auvergne Rhône Alpes region of France, and artistic co-director of Les Nouveaux Nez & Co, has been collaborating with the Luxembourg Philharmonie for many years now. He directed the shows *Plume & Paille* and *Petouchok* for the Company *Adroite Gauche*, followed by *ChapôChapô* and *Circo Piano*, his first two pieces commissioned by the Philharmonie.

The starting point for all these shows has been the combination of live music and dance, en-

couraging the performers to explore and invent burlesque characters.

These three shows, devised for young audiences and families, have been touring for many years now. *Claricello* is Alain's third commissioned piece from the Philharmonie. Once again, music is central to the work whilst the door remains open for all sorts of performers to join the project.

Naturally, the invitation is veered towards classical music and nursery rhymes, dance and burlesque humour.

IN THE DIRECTORS SEAT ...

Alain Reynaud, clown

Sometimes we cushion the blow by saying “director-artist”. But the truth is, it’s this wide gap between the two roles which keeps Alain hooked; he wears two hats: he is the director of the Cascade (National Circus Centre for the Auvergne Rhône Alpes region of France) and he is also a clown. But he wears both hats as if they were one : political, poetic, idiotic, erudite, representing authority and also freedom; he’s a manager who thinks outside the box, cutting across paradoxes, carving out a career path where dreams and reality move forward together. Defining himself as an eclectic-bulimic, he approaches his craft from different angles: actor-clown, teacher, director. In the end, it all comes down to putting things together, connecting, taking, passing on, cutting words into a thousand pieces; all this is very much the DNA of Félix Tampon, his august clown. Félix Tampon, lost, disorientated guide from an imaginary world, a go-between who dreams of bringing people together for one great big party.

A former student at the CNAC - Centre National des Arts du Cirque (Year Group no.2), Alain is one of the co-founders of the Nouveaux Nez Company with whom he has created a multitude of shows : Cinq folies en Cirque mineur (Five Follies in Circus Minor), le Jour des Petites lunes (Day of the Little Moons), le Théâtre des Nouveaux Nez (The New Noses Theatre), Mad or Nomad ...

He has directed shows for the company Adroite Gauche, the show Klaxon for the company Akoreacro and numerous site-specific shows for the Alba Circus Festival : La Grande Suite, Circo Barolo, Roue Libre (Free Wheel)... In 2015



© Daniel Michelin

the CNAC invited him to stage their 27th year group student show : Avec Vue sur la Piste. In 2016, he shared the stage with two other professional clowns : Heinz Lorenzen and Gabriel Chamé Buendia, in the show Triio.

He has been associate artist with the Luxembourg Philharmonie since 2018, directing the show Chapô Chapô, followed by CircoPiano, both projects fusing circus with live classical music.

In the field of teaching, he collaborates regularly with circus and drama schools such as the CNAC, ENSATT and la Comédie de St Etienne;

ONSTAGE ...

Isabelle Quinette, dancer

Isabelle has journeyed between many companies, from contemporary dance (Sidonie Rochon, William Petit, Marie-Jo Faggianelli), to theatre (Ilotopie, le théâtre de l'Unité) to circus with Le Cirque des Nouveaux Nez. In 2008 she founded the company Adroite Gauche and went on to make three shows : Plume & Paille in 2008 followed by le Bal Adroite Gauche in 2011 and Pétouchok in 2013. All three shows were directed by Alain Reynaud, their main through-line being the relationship between dance, clowning and music. Following on from these shows, Isabelle performed in ChapôChapô, Alain's first commissioned piece from the Luxembourg Philhar-



monie. She is a trained contemporary dance teacher with a state-registered diploma, and she teaches dance in her workshop "L'Atelier du mouvement" at Bourg St Andéol in the south of France.

Fabrice Bihan, cellist

Fabrice Bihan, eclectic cellist, has orientated his career in many different directions, his aim being to become a true modern day performer, continually searching for new ways to bring classical musical into the present day. As a soloist, he has led an international career, composing numerous concertos and pieces for the cello every year. He maintains strong working relationships with a number of famous and budding composers of our time, many of whom have composed music for him. As a chamber musician, currently at the heart of the Trio à Cordes in Paris, and following 5 years



with the award-winning Quatuor Debussy, he now regularly works onstage with numerous well-known artists. Fabrice performed in ChapôChapô as musician and actor.

Louise Marcillat, clarinetist

Louise figures amongst the new generation of French clarinetists, having shone throughout her music studies with Florent Héau and Nicolas Baldeyrou. She received a First Class Masters in 2016 and was awarded first prize with acclamation in her final year at the Conservatoire National Supérieur de Lyon, France. As a concert musician, she has been invited for years running to perform in festivals such as Cordes en Balades, ArtenetrA, Messiaen au Pays de la Meije, and Festival La Belle Saison alongside Maurice Bourgue and Florent Boffard. She has also performed in international festivals like Clarifest in Orlando, where Vandoren chose her to represent French clarinetists. Constantly searching for new ways to hone her rela-



tionship with the stage and audience, Louise often works in the world of theatre, cinema and circus. She has also been lucky enough to collaborate with numerous composers in contemporary creations as a soloist, such as Patrick Burgan and Vincent Paulet. Louise is an Adami scholarship laureate.

THE CREATIVES ...

Clara Trotabas, assistant director

Having passed her baccalaureate in theatre studies, Clara began studying at Sciences Po Paris, actively participating in theatre and cinema projects with her fellow students, directing shows and making short films.

She then flew to New York to follow drama classes for a year at the Sarah Lawrence College. When she returned to Paris she began a Masters Degree at Sciences Po and continued her artistic projects with her fellow students. During an observation course at the Cascade National Circus Centre, she crossed paths with



Alain Reynaud and the imps from Claricello, staying on to accompany them in their journey.

Léa Emonet, costume designer

After a year of Applied Arts and couture in the Paris region, Léa trained as a costume designer with a DMA (Diploma in Métiers d'Art) in Lyon. She then joined the ENSATT (National School of Theatre Arts and Techniques), specialising in historical and contemporary costume design. She finalised her years of training with a postgraduate programme in costume design. She has since had lots of experience in costume design and creation in different fields : theatre, cinema, advertising, the events sector. Her



current professional work continues to explore a wide range of diverse projects, oscillating between live shows and cinema.

Gilles Richard , lighting designer

Gilles has collaborated on numerous projects merging different artistic disciplines, notably with Johnny Bert, creating shows where puppetry fuses with dance and visual art (Krafft, Le Petit Bain/ The Little Bath). He also works with choreographers such as Padmini Chettur and Aurélien Richard, designing their lighting landscapes, and has worked for years with the puppeteer Emilie Valantin as lighting designer, set designer and puppet maker. His professional career has been punctuated by projects with live music at their core: Philémon and Baucis in 2004, a collaboration with Les Monts du Reuil, and his current work with Aurélien Richard. His touring work has taken him to prestigious theatres such as the Paris Odéon, Chaillot,



l'Opéra-Bastille and to numerous festivals across the world : Avignon, Berlin, Edinburgh, Moscow etc.

PARTNERS

Production :

Luxembourg Philharmonie and Les Nouveaux Nez & Cie

Co-production :

Le Festival Les Elancées - Scènes et Cinés - scène conventionnée Art en Territoire

Support :

La Cascade, PNC Auvergne Rhône Alpes



Orchestre
Philharmonique
Luxembourg



SCENES & CINES
SCÈNE CONVENTIONNÉE ART EN TERRITOIRE

LA
CAS~
CADÉ
PÔLE NATIONAL
CIRQUE ~ ARDÈCHE
AUVERGNE • RHÔNE • ALPES

CONTACTS

Production

Erena Serre – +33 (0)6 83 61 45 76

erenas@lesnouveauxnez.com

Les Nouveaux-Nez & Cie

Avenue de Tourne - 07700 Bourg-Saint-Andéol - France

www.lesnouveauxnez.com



ÉMILE
SABORD

BUREAU D'ACCOMPAGNEMENT
CULTURE • CIRQUE ET CLOWN

PAULINE BOULAI
PRODUCTION@EMILESABORD.FR
+33 (0)6 50 20 61 54



PRODUCTION EMILE SABORD

EMILE SABORD PRODUCTION
2 RUE DU DIEU MITHRA
07700 BOURG SAINT ANDÉOL



WWW.EMILESABORD.FR

EMILE SABORD